

Spot Light Series

High Brightness LED Lighting Fixture

Document Reference #: APN002a
Issue Date: September 14, 2005

Introducing the latest Solid State Lighting designed for spot and flood lighting applications. These ergonomic High Brightness LED Lighting Fixture adopt the most advanced high bright LEDs in an extruded aluminum enclosure. The IP66 rated enclosure is suitable for outdoor, wet location applications. The swivel base is designed for easy mounting and wide-angle adjustment. The state of the art LED driver (power supply) provides constant current to enhance the consistency of LED color temperature, life expectancy. And its known benefit of energy saving and durability for nearly maintenance free fixtures. Three type of lens provides light output angle from 10 to 36 degrees.

Product features:

- Full range AC input - 110 ~ 240VAC, 47-64Hz
- Six (6), Five(5) and three (3) high bright LED in 3-Watt capacities.
- Custom lens provides 10 degree and 36-degree light output.
- Switch-mode constant current driver built-in
- Versatile swivel base
- IP65 suitable for outdoor wet location
- Various color selections are also available

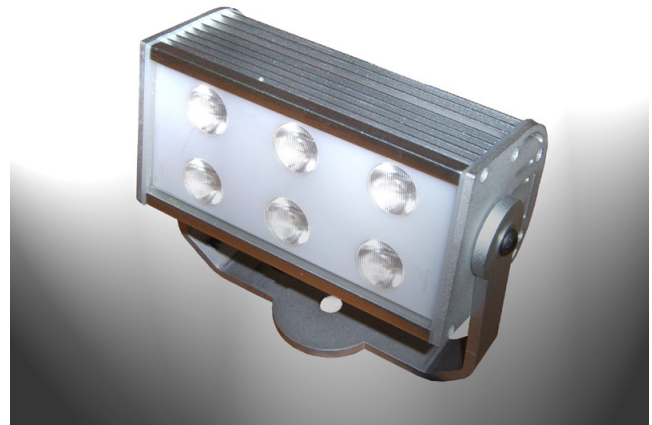
Electrical Specification:

Input	110-240VAC, 47/64Hz
Power Consumption	6 x 3W LED - 18.7-Watts typ. 5 x 3W LED - 15.6-Watts typ. 3 x 3W LED - 9.33-Watts typ.
Efficiency	90% typ.
THD	.80
Crest Factor	1.5 max.
VF	6 x 3W LED - 15 – 24VDC typ. 5 x 3W LED - 12.5 – 20VDC typ. 3 x 3W LED - 7.5 – 12VDC typ.
Forward Current	6 x 3W LED - 700mA typ. 5 x 3W LED - 700mA typ. 3 x 3W LED - 700mA typ.

Model Selection:

F	2	3	3	4	-	5	6	6	7	8	-	9	10
---	---	---	---	---	---	---	---	---	---	---	---	---	----

F	Flood light series
2 – Rotation of the unit	Swivel
3 – Number of LED	06 / 05 / 03
4 – Input Voltage options	H-AC110/220 (DC optional)
5 – Power of LED	1-Watt or 3-Watts
6 – Lens Size	20
7 – Lens Type	Spot / Wide angle
8 – LED Color	White / Red / Blue / Green
9 – Frame Color	Silver
10- Reserved	Reserved



Mechanical Specifications:

